

N. 47138.000

N. 47019.000

SETBACK LINE  
N. 46921.000

N. 46881.000

N. 46861.000

FUTURE U.G. CORRIDOR **ممر مستقبلي**

UG  
SWW TIE IN POINT 05 SU 58206  
N 46878.560  
E 57269.900  
EL 95975  
Z-52001 METERING STATION FOR SEA WATER  
Z-55001 METERING STATION FOR NATURAL GAS  
METERING STATION FOR NITROGEN  
N 46896.750  
E 57243.950  
N 46896.750  
E 57220.000  
N 46896.000  
E 57203.000  
PLOT BOUNDARY LINE INDUSTRY-4  
SWC S TIE IN POINT 03  
N 46878.560  
E 57244.100  
EL 5975  
NN2 TIE-IN NO. TIP-10(PTC)  
N 46899.500  
E 57217.500  
EL xxx  
N 46899.500  
E 57217.500  
EL xxx  
N 46899.500  
E 57217.500  
EL xxx

**معالجة تصريف الطوارئ**

EMERGENCY RELIEF TREATMENT

**معالجة غازات التهوية**

VENT GAS TREATMENT

E. 57131.800

**استرداد نفايات الكلوروسيلان**

CS WASTE RECOVERY

**استرداد نفايات الكلوروسيلان**

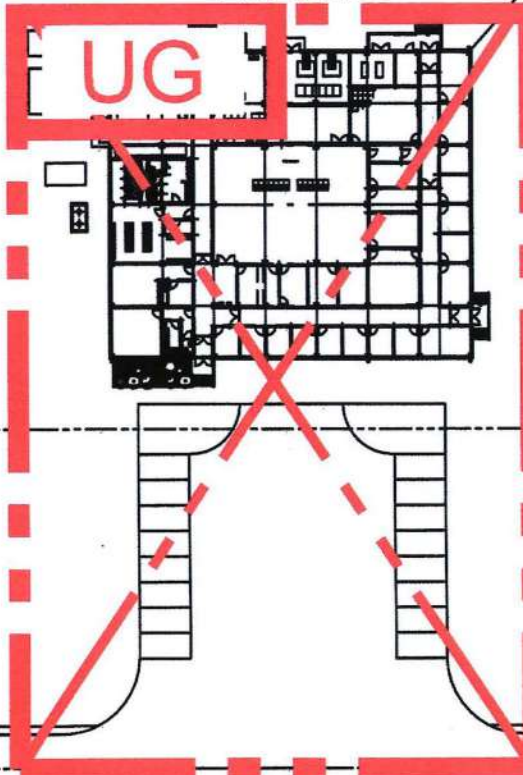
HYDROCHLORINATION

E. 56996.800

**REFRIGERATION SYSTEM PACKAGE**

E. 56907.050

CENTRAL CONTROL ROOM



RAIL ROAD ROW  
FEED STOCK & FUEL GAS  
SEA WATER COOLING ROW

POW TIE IN POINT 06  
N 46871.000  
E 57740.000  
EL xxx  
E. 56730.000  
PLOT BOUNDARY LINE INDUSTRY

DAWMEC DAWMFLUVA